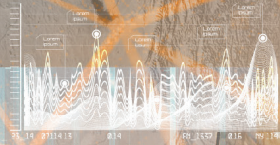


DEFENCE AND SPACE  
Intelligence

# I4D

A Solution for Multi-source  
Intelligence Exploitation

RS/0211 SEARCH / ON  
RS/0211 SEARCH / ON



PORT B-05

08953 08953	08953 08953
15679 15679	15679 15679
96842 96842	96842 96842
08953 08953	08953 08953
15679 15679	15679 15679
96842 96842	96842 96842
08953 08953	08953 08953
15679 15679	15679 15679
96842 96842	96842 96842
08953 08953	08953 08953
15679 15679	15679 15679
96842 96842	96842 96842

SEARCH / ON  
SEARCH / ON

RS/0211

RS/0211TR / ON



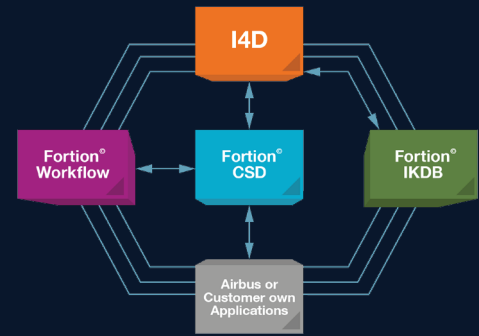
SEARCH / ON  
SEARCH / ON

# AIRBUS

# I4D Intelligence for Decision

From multi-source data to GEOINT analysis and Common Intelligence Picture (CIP)

Decision makers have now access to a variety of data to base their decisions upon. If at first sight it seems like an advantage, in reality, it is more a challenge: the amount of data made available keeps increasing, these are multi-source with different technical characteristics and do not bring the same level of information. Alone they may not mean anything, but fused together they provide valuable insight: intelligence reports contribute to the Common Intelligence Picture. Making the best informed decisions implies to rely on data that are reliable and understandable.



Intelligence for Decision (I4D) is a powerful set of solutions for geospatial analysis of multi-source data and intelligence report production on one single interface.

## Expert tool easy to use

I4D allows the fusion and correlation of information from image intelligence

(IMINT), signal intelligence (SIGINT), human intelligence (HUMINT), open-source intelligence (OSINT)... It has been designed to support intelligence agencies including joint and armed forces intelligence units (Army, Navy and Airforce). Based on a virtual globe, I4D is designed to provide analysts with the tools to

visualise, fuse and correlate geospatial and time-tagged data. A reporting module allows to generate reports directly via the interface.

Depending on the needs, two versions of I4D are accessible.

### I4D Explorer – Desktop application

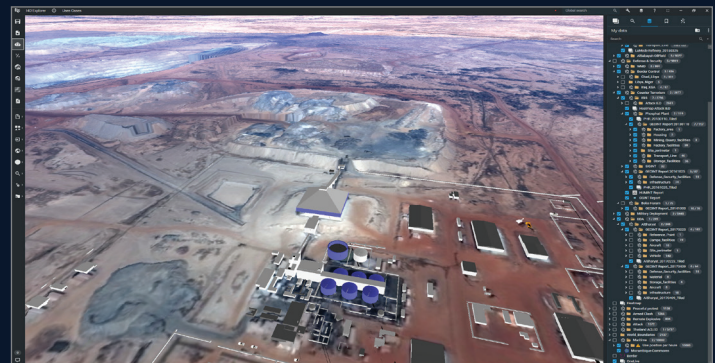
The end-user can choose to access I4D installed on its computer. Functions include fluid visualisation, data management (import, access, search and filtering), analysis and advanced processing, and reporting.

### I4D Web – Web client

Running within an internet browser, I4D Web is the light-client version of the I4D Explorer desktop application. It focuses on geospatial data dissemination and visualisation.

### Key Benefits

- **Accessible:** expert tool easy to use and quick to learn
- **Time-saving:** a single interface from collection to report production
- **Interoperable:** data compatible with OGC standards and other geospatial formats
- **Expertise:** tailored GEOINT training available



### Key features

- Interoperability with Fortion® Workflow, Fortion® CSD, Fortion® IKDB and Airbus or Customer own Applications
- Compatibility with NATO stanags
- Virtual globe and embedded timeline
- Report creation module
- Profile management with authorisation check
- Data storage with profile management, authorisation check
- Cloud data storage capability

### Key references

- Combat-proven: more than 3000 users worldwide
- French Armed Forces (Air Force, Navy, Army)
- Deployed within NATO and NATO member countries
- Thailand - GISTDA (Geo-Informatics and Space Technology Development Agency)
- Intelligence centres in Middle East

### Airbus Defence and Space

Australia, Brazil, China, Finland, France, Germany, Hungary, Singapore, Spain, United Kingdom, United States

This document is not contractual. Subject to change without notice. Copyright 2020. All rights reserved.

# AIRBUS

@AirbusSpace  
www.intelligence-airbusds.com