

A firefighter in full gear, including a helmet and a large oxygen tank on their back, is kneeling on the ground in front of a large, intense fire. The fire is bright orange and yellow, with thick smoke rising. The firefighter is looking towards the fire, and a fire hose is visible on the ground.

**DEFENCE AND SPACE**  
Intelligence

## **SAFEcommand™** **Response**

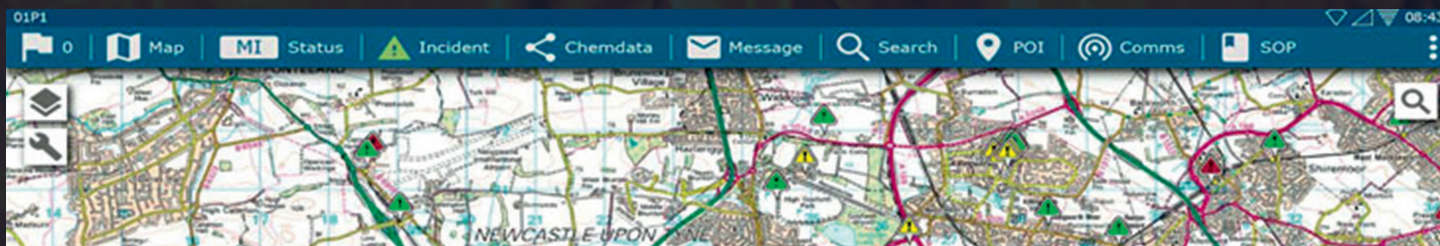
Providing Mobile Operational  
Risk and Incident Information  
to First Responders



**AIRBUS**



# SAFEcommand™ Response



Deployed into operational vehicles on a ruggedized tablet PC, SAFEcommand Response (ScResponse) brings together operational information, mapping, data communications, status updates and real-time vehicle locations into a clear, intuitive interface.

## Benefits

- Ensures up-to-date information is available on the incident ground.
- Reliable data communications ensure efficient use of information bearers.

## Features

ScResponse combines datasets to provide a common operating picture to those who need it most. Prepare in advance of arrival to incident, communicate faster with others and have information available at their fingertips.

---

Provides access to a full range of operational information.

---

Easy-to-use touchscreen interface with optional integrated navigation.

---

Priority and guided message facilities.

---

Provide control room and other vehicles with real-time location.

## GIS-based Operational Information System

- View known risks, points of interest, standard operating and incident procedures.
- AddressBase Premium gazetteer.

- Supports multinational language and mapping standards.
- Overlay support.

## Critical Information at your Fingertips

- Access information for operational and mutual aid areas.
- Integrated vehicle safety information database.
- Chemical hazard information access.

## Automatic Vehicle Location System

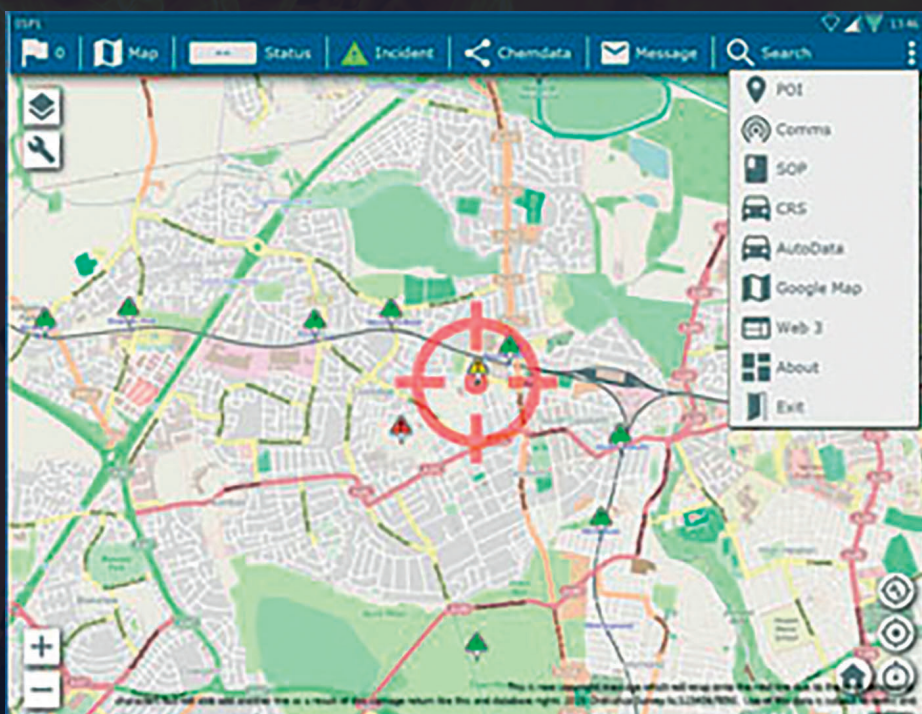
- Supports dynamic mobilising by providing a real-time view of vehicle locations.
- Improved situational awareness, planning and standards of fire cover.

## Mobile Data Communications

- Reliable mobilising, status and text messaging facilities over a variety of communications bearers.
- Multiple bearer support.
- Efficient incident and status messaging with delivery, routing and retry strategies.

## Modular Service Architecture

- Implement only your desired modules.
- Highly customisable.
- Provides efficiency of use and reduced training.



## Airbus Defence and Space

Partnership House, Regent Farm Road,  
Gosforth, Newcastle upon Tyne, NE3 3AF, UK

Twitter: @AirbusSpace

safecommand.sales@airbus.com

www.intelligence-airbusds.com

This document is not contractual.

Subject to change without notice.

Copyright © Airbus DS / Intelligence 2015.

© iStock: TOMRUETHAI

All rights reserved.

# AIRBUS